

Share the Word!

FEBRUARY

Feb 6	Matt 5:13-20	“Lightly Salted”
		<i>HOLY COMMUNION</i>
Feb 13	Matt 5:21-37	“No Put-Downs!”
Feb 20	Matt 5:38-48	“Be Cheeky”
		<i>HOLY COMMUNION</i>
Feb 27	Matt 6:24-34	“Flower Power”

Dear Prince of Peace Family of Faith,

As we enter February on the calendar, we enter a threshold between the celebration of Advent/Christmas/Epiphany, and the solemnities of our six weeks of Lent leading to Holy Week and then the Easter celebration. In the ancient Roman calendar, neither January nor February existed, because winter was thought to be monthless. Despite the fact that we currently float along the river of time between two peak seasons of the Christian calendar, we still have a lot to celebrate and observe!

February is National Black History Month, and predecessors to the United Church of Christ, the Congregationalists, were the first established denomination in the United States to ordain an African-American pastor way back in the 18th century. Today, it seems inconceivable that African-Americans wouldn't be allowed to answer the call to ordination, but in its day, this action sparked quite the controversy among the European-American dominated culture. This prophetic legacy of edgy inclusion will contribute to the positive energy of a workshop for supporting Evangelism in our local St. Louis area UCC churches to be held on February 5 (more information at www.missourimidsouth.org). You may also see our inclusive denomination featured on your television set in Lent, through the airing of a sweet commercial entitled “All the People” (more information at www.ucc.org/allthepeople/). The commercial reveals heart-string

tugging images of diverse families finding welcome in churches, and ends with the slogan, “The United Church of Christ: no matter who you are, or where you are on life’s journey, you are welcome here.” I *hope* that we grow to bring more and more truth to that slogan, in our Prince of Peace family of faith, and in the wider Christian Church.

I also hope that those groundhogs don’t see their shadows on Groundhog Day, February 2, because I’m ready for the warmth and new growth of spring! But I won’t panic if the rodents prophesy a longer winter, because I know that our Prince of Peace family holds powerful warmth and potential for new growth no matter the weather outside our beautiful doors. Thank you for adding to that warmth and new growth, as our lives unfold together!

Blessings,

Pastor Joe

PRESIDENT’S REPORT

The annual 2010 printed report to the congregation along with the January Congregational Meeting

does its best to answer any questions about your church. You need to know what has happened in the past year and also where we’re headed in the New Year. There is no such thing as a church or church program that can’t be improved. The people you have chosen to be your council representatives need to hear your concerns about Prince of Peace. Please talk to any council member about positive or negative observations about personnel, programs, or property. Your comments will be considered at the next council meeting and you will get a response.

We have a pastoral relations committee to address any situation of a confidential nature. Only information that would affect the congregation would be brought to the council’s attention.

Prince of Peace is also blessed to have a Care Team. This group makes visits to those who need to know their church is there for them at all times whether they are at home, a retirement home, or hospitalized. We need your help to

identify those people. Contact the church office if you know of someone needing care or reassurance.

We have some great people on the church council for 2011. Everyone feels called to do their best for Prince of Peace and will be sharing their time and talents to make us a caring and progressive congregation. Your council members are Linda Becker, Bernie Harmon, Phil Livingston, Dina Michael, Joyce Morgan, Jan Polizzi, and Roy Schmiemeier. We now welcome new members Kay Givens and Monte Nesser.

We all need to say thank you to Tracey Ashwell for her service during a challenging three year term. Her commitment to the congregation of Prince of Peace is an inspiration to us all.

Let's work together to make 2011 a great year for Prince of Peace.

See you in church,

Roy

Christian Education

As we begin the second month in another calendar year, I find myself feeling amazed at how quickly our children are growing and maturing. We are blessed to see them each week as they share their incredible gifts with us—their gifts of humor, music, playfulness, and inquiry have enriched the life of our congregation in many ways. A couple of them will soon finish their first year of high school in a few months. Some have transitioned to middle school and will be embarking on their confirmation journey in the fall. Our preschool, kindergarten, and elementary school children are forming bonds of friendship as they experience the love of God together in Sunday school. Since the nursery room has been reestablished, even our young toddlers feel the warm welcome of loving arms and caring souls around them.

When I wrote and submitted the Christian Ed annual report, I felt a great amount of pride in all that we accomplished in 2010, and we will continue to offer meaningful and fun learning experiences to our children in 2011. We will search

for opportunities to involve our youth in projects to help others whenever possible, and we will recognize them for their own service work they perform in the community.

Adult Christian Education has flourished as well. Pastor Joe's invitation to read and explore the Bible has been well received by our church community. Several of you have answered his call to ask questions and openly share and discuss things that you might not have had the opportunity to do at other times in your faith journeys. These experiences reveal what we have in common and bring us closer together as a community of faith. I feel that your commitment to fostering your own learning sets a great example for our children. They, too, have many questions and are learning to search for answers.

So as I reflect on 2010 and think about the possibilities for what may lie ahead in 2011, I envision all of us working and learning and growing together to make a difference in the lives of our

children. I'd like to thank *Tracey Ashwell, Bob Blackburn, Joe Hubbard, Jan Polizzi, Diane Randle, Judy Schmiemeier*, and *Christine Schlomer* for working with our children in Sunday school in the month of January. An African proverb says that it takes a village to raise a child, and I appreciate all of you for making a difference.

Your Board of Christian Education meets once a month. Summaries of each meeting are included in the church council meeting minutes, which are on file in the church office. Current members include Linda Becker, Jan Polizzi, and Pastor Joe.

Yours on behalf of the Board of Christian Education,

Linda Becker

WOMEN'S FELLOWSHIP

The Women's Fellowship had 25 ladies attend our annual Christmas Luncheon on December 1. We enjoyed the catered meal, and entertainment by "The Church Lady."



The eight-annual Cookie/Craft Sale was December 11. Thank you to everyone who donated cookies for the sale. We didn't get as many as in past years, but we still had a nice variety of cookies to offer and made a profit of \$1900.00. With fewer donations we didn't have many to sell on Sunday morning so the remaining cookies were boxed up and given to the Adopt-A-Families for Christmas. Again, **thank you** for baking and buying cookies.



We also donated funds for the Adopt-A-Family Christmas gifts.

Our next activity will be the Valentine Salad Luncheon on February 10. We ask everyone to bring a salad to share. We will have staff from JNM as our guests. There will be a business meeting

that morning at 9:30 with lunch to follow at noon.

We look forward to 2011 and continuing our many planned activities. We encourage more ladies to join us.

Jeanine Ashwell

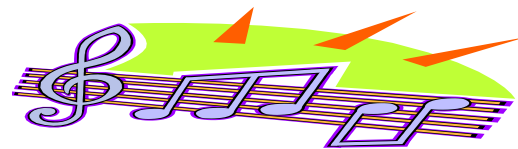
ROMEOS

(Retired Old Men Eating Out)

The Retired Men's Group will meet at Miss Sheri's Cafeteria, 5606 Southfield Center on Baptist Church Road at South Lindbergh on Wednesday, February 9th at 11:30 a.m. Plan to join us for good food, conversation, laughter, and fellowship.



If you would like to carpool, please meet at church between 11 and 11:10 a.m. If you do not drive and would like to have someone pick you up, please talk to **Dennis Kreienhader**.



Music is such an important part of our worship service, and we thank **Paul Westcott** and our choir for

their dedication. Our thanks to Michele Ardrey for filling in for Paul on a snowy Sunday morning.

The Christmas music was beautiful and we thank the following for their contributions: Linda Becker, Michele Ardrey and Pastor Joe; Michele and Elise Ardrey; Linda Becker, Dina Michael; and Bob Blackburn.

Choir meets each



Wednesday Evening from
6pm to 7:30 pm.

Mission & Outreach Committee
EVERY CHILD'S HOPE

(Evangelical Children's Home)
(ECH) - \$390.00 was collected Thanksgiving Eve and sent to ECH, along with 4+ containers of items for their Christmas Store which the residents used for their Christmas shopping. Thank you to all who donated and especially Women's Fellowship for many Christmas items from their Spring sale.

CHRISTMAS FUND - \$362 was collected for the Veterans of the Cross to assist retired pastors in their retirement and during emergencies. Thank you for your generosity.

LYDIA'S HOUSE – See their holiday Thank You included in this newsletter. Please put on your calendar that our next meal to be delivered to Lydia's House is Wed., March 23rd. We hope you can help us with a food dish for that meal.

ALL IN THE FAMILY

We extend our Christian love, prayers, and faith in the healing power of Christ to those who are in need of healing, whether it is physical, emotional, or spiritual. Please remember the following in your prayers:

Charles and Norma Kennedy at Nazareth after an auto accident.

Jeanne Zwick who has been at St. Anthony's, and Jonathan Vierling (Gerri Mueller's nephew) who needs extensive surgery following an auto accident last year.

Our prayers are with Jim and Ginger Crooks on the death of Jim's brother-in-law; Tom and Marian Rollins on the death of Marian's

mother, and the John Kramer family on the death of their very good friend and Andrew's godfather.

On January 2nd we welcomed Brent and Sydney Larson into the fellowship of our congregation. It is with joy that we welcome them into our family of faith.

Mason Birk Tinker was born Jan. 3rd, 8 lbs, 12 oz., to Birk and Christy. Proud grandparents are Steve and Judy Graf. Congratulations!!

Our new website is available for online viewing. More will be added soon. Thanks to **Tracey Ashwell** for updating the site.

www.princeofpeaceucc.com

Please report family news to **Jean Skaggs, 314-843-5459**

ADVENT AND CHRISTMAS

Our thanks to all who prepared for the Hanging of the Greens. Advent is the season of waiting and preparing for the transformation and enlightenment of the whole world. We are especially thankful for those who participated in the lighting of the Advent Wreath. We are thankful for the annual Advent

workshop led by Linda Becker. We are thankful for those who participated in the Christmas Adopt-A-Family tree. We are thankful for those who donated poinsettias. We are thankful for our children and their wonderful Christmas program and to the adults, parents, Paul Westcott, and our choir for making it a great success. Special thanks to Linda Becker and Susan Schraut for coordinating and directing. And last but not least to all those who undecorated the sanctuary. It was truly a delightful and beautiful Christmas.

February Birthdays

3 Luisa Howell
5 Kay Givens
7 Doris Anderson
9 Joan Vogler
14 James Crooks
22 Vivian Fields
23 Bernie Harmon
24 Ken Robinson
27 Bob Mills
Kim Meyer

February Anniversaries

14 Les & Vicki Absheer-Getz
17 Scott & Tracey Ashwell

Consecrating Stewards have provided Prince of Peace with a “Treasure Trove” as indicated in the time and talent section of gifts of self. Thanks to those who share these gifts of time and self.

Scripture Readers

6 Dina Michael
13 Betty Wagner
20 Judy Schmiemeier
27 Jean Mueller

Greeters

6th Judy & Steve Graf
13 Norma & Sam Hauck
20 Georgia Gapsch
27 Kay Givens

Usher Schedule

1st Sunday

Sam Hauck
Ron Randle
Phil Livingston
Roy Schmiemeier

2nd Sunday

Michele Ardrey
Ed Bearden
Paul Blackburn
Rob Faust
Terry Zwick

3rd Sunday

Dennis Kreienhader
Russ Meyer
Bob Morgan
Art Scruggs

4th Sunday

Jim Crooks
Bob Mills
Monte Nesser
Ed Waltemath

5th Sunday

Sunday school children

If you cannot read, greet or usher on your Sunday, please try to contact someone to fill in for you or let **Billie** know. Thank you.

Flowers

If you would like to provide flowers for the altar on a Sunday, please speak with **Betty Wagner** (636-733-0319) or sign the flower chart in the fellowship hall.

Grocery Certificates

Remember that Dierberg’s and Shop “n” Save cards are on sale each Sunday. If you shop at Schnuck’s, ask Diana or Ron Randle about e-scrip. The e-scrip card does not cost anything, and when it is presented at time of purchase, our church will receive a percentage depending on the amount of purchase. So, if possible, try to consolidate your shopping and/or pharmacy purchases into one big purchase.

Newsletter-Bulletins

Sponsors are needed for the bulletin (\$10.00) and newsletter (\$25.00). If interested, please speak with Billie, or a sign-up sheet is located in the fellowship hall.

Office Depot

Remember to give the church telephone number (314-843-8461) when making a purchase or returning your empty printer cartridges as we will receive \$3.00 each for the cartridges and a percentage of purchase through "Worklife Rewards."

Celebration Bricks

If you are interested in purchasing a brick for a love one, there are forms on the table in the fellowship hall, or see Billie. Take a look at the sidewalk as you come in the front door. I have an order for a brick now, so if interested, please let me know. Bricks are \$100.00.

Postage Stamps

Please remember to bring your cancelled postage stamps from your mail, and put them in the container on the table in the fellowship hall as this is an ongoing project. Any questions, please speak with Joan Schroeter.

JOINT NEIGHBORHOOD MINISTRY (JNM)

Thanks to all who contributed so generously to JNM during December and January.

In December we received:

- 1 case green beans
- 1 bag food
- 60 rolls toilet tissue
- 1 shampoo
- 1 dish liquid

In January we received:

- 4 bags food
- 10 boxes Pasta Rone
- 10 boxes AuGratin Potatoes
- 9 cans spaghetti
- 21 boxes Mac & Cheese
- 81 bars soap
- 6 cans cleanser
- 1 dish liquid
- 2 cans shaving cream

During February we will be collecting PEANUT BUTTER, a great source of protein and always in demand. Winter is a busy time for food pantries, as people must make the choice between heat and eating. Thank you for your continued faithful support of Joint Neighborhood Ministry.

Let's Celebrate Our 2010 Mission Support

Over the last four decades, Prince of Peace's mission and service projects have continued despite the state of the economy or the size of our dedicated congregation. Our efforts are not just financial, but also include goods, labor and services. No matter what the call is for, we give what we can. Let's review 2010 and give thanks!

FINANCIAL SUPPORT

Our Church's Wider Mission (OCWM)	\$5000
St. Louis Association	3000

This is the basic support of the ministry and mission of the United Church of Christ.

SPECIAL UCC OFFERINGS

One Great Hour of Sharing	\$ 535
Strengthen the Church	350
Neighbors in Need	275
Christmas Fund (Vet of the Cross)	362
CUE (Chicago, United & Eden Seminaries)	210

CONFERENCE MISSION EFFORTS

Joint Neighborhood Ministry	
POP Member Donations	155
Matthew 25 Crisis Fund (POP Members)	280
Matthew 25 Crisis Fund (Women's Fellowship)	180
School Supplies/Backpacks (Women's Fellowship)	100
Men's Personal Hygiene Kits (Women's Fellowship)	92
Christmas Gifts/Food (Women's Fellowship & POP Members)	250
Every Child's Hope	411
Habitat for Humanity	500
Emmaus Homes (Women's Fellowship)	25
Haiti Earthquake Relief	1098
Camp MoVal	
Pastor's Installation	609
Potato Pancake Dinner	730

TOTAL FINANCIAL MISSION SUPPORT FOR 2010 **\$14,162**



Newsletter articles are due
February 21

**2011 WOMEN'S RETREAT
April 29—May 1**

COME JOIN THE WOMEN OF THE
MISSOURI MID-SOUTH CONFERENCE UCC
AT CAMP MO-VAL IN UNION, MO



COME LEARN HOW TO
CREATE AND STRENGTHEN MORE MEANINGFUL RELATIONSHIPS
AND CELEBRATE THE GIFTS OF FRIENDS AND COMMUNITY

FEATURING
Joy Allen, LCSW, M.Div.
Keynote Presenter
and
Susan Drake & Julie Jennings
Guest Musicians

Dear Prince of Peace friends,

Many, many thanks for your much-appreciated donation to Lydia's House. We value your support of our Holiday Project and your interest in helping us to provide gifts to our residents during this Holiday Season.

As you know, many of the families who come to Lydia's House arrive without much more than the clothes on their back. Your gifts will provide the women and children of our program with a happy holiday experience.

Your willingness to give towards the goal of assisting women and children on their path to independence is essential to our mission. We are so grateful for the holiday gifts brought to Lydia's House through your caring, and we thank you on behalf of the women and children of our program.

Katie Lancaster

Men's Retreat at Shannondale

WHEN: April 15 – 17, 2011

WHERE: SHANNONDALE UCC Tree Farm and Retreat Center, Shannon County, Missouri

WHO: Men from ages 14 and up
Our group will be joined by men from other local UCC Churches

WHY:

- 1) Spiritual growth
- 2) Fellowship
- 3) Recreation and Fun
- 4) Great eating
- 5) Service to the Shannondale community
- 6) Opportunity to recharge

COST: \$60 per person – Includes Lodging and Food

Please contact Jonathan Jones at (314) 608-0783 or jonathan@jonathanjonesconsulting.com

ABOUT SHANNONDALE:

Shannondale Community Center is a Mission project of the Missouri Mid-South Conference UCC serving the spiritual, educational and economic needs of Shannon and the surrounding counties through its many functions. Shannondale also encompasses the Bucher Memorial Tree Farm, the oldest continuing tree farm in the state of Missouri. The tree farm illustrates our continuing commitment to God's land and its resources. The Wobus Crafts Center was established to serve as an outlet for local artisans to supplement their incomes. The center features baskets, woodwork, quilts and other handmade items. Shannondale provides varied lodging arrangements for families and groups on service projects, work camps or retreats.

Shannondale is about 40 mile south of Rolla, MO, near the Ozark National Scenic Riverway.

LODGING: Dormitory-style air-conditioned bedrooms. Please bring your own bedding and pillow. Camp sites and camp sites with electrical hook ups are available.

MEALS: Meals will be family style

WORK PROJECTS:

Work projects will depend on the number of men and the skills of the men attending. Please let Jonathan know what specific skills you can provide.

Schedule of Event:

Friday – April 15th:

Drive down to Shannondale. Car pools are encouraged for safety and fellowship.
Arrive at Shannondale – Get familiar with the location and the other men
Orientation meeting

Saturday – April 16th:

Hearty Breakfast
8:00 – 12:00 – Work Projects at Shannondale
Lunch

Afternoon Activities:

- Canoeing on the Current River - Extra Cost - \$20 per Person extra
- Hiking
- Golf – Extra Cost -
- Volleyball
- Wiffleball
- Enjoying the outdoors
- Relaxing and conversation

Steak Dinner

Program / Evening Campfire / Star gazing /Conversation

Sunday – April 17th:

Breakfast
Clean up
Church Service at Shannondale UCC
Head back home

February 2011

Sunday	Monday	Tuesday	Wednesday	Thursday	Friday	Saturday
		1	2 6 PM Choir Rehearsal	3 9:30 AM Women's Fellowship meets 6:15 PM Girl Scout meets	4 9 AM JNM	5
6 10 AM Worship , all Sunday School Communion 11 AM Coffee	7 9 AM JNM	8 7PM Mission/Outreach	9 11:30 AM ROMEOS Luncheon 6 PM Choir Rehearsal	10 9:30 AM Women's Fellowship 11:30 AM Valentine Salad Luncheon	11 9 AM JNM	12
13 10 AM Worship , all Sunday School 11 AM Coffee	14	15 11 AM Pastoral Care 7 PM Church Council Meets	16 9 AM JNM Food Delivery 6:00 Choir Rehearsal	17 9:30 AM Women's Fellowship 6:15 PM Girl Scout meets	18 9 AM JNM	19 12:30 PM – 3 PM Towne South Homeowners Assn meets
20 10 AM Worship, and Sunday School 11 AM Coffee	21 March newsletter articles due	22 7 PM Church Council Meeting	23 9 AM JNM Food Delivery 6 PM Choir	24 9:30 AM Women's Fellowship 2:30 PM Pastoral Mtg.	25	26
27 10 AM Worship & all Sunday School 11 AM Coffee	28					

